

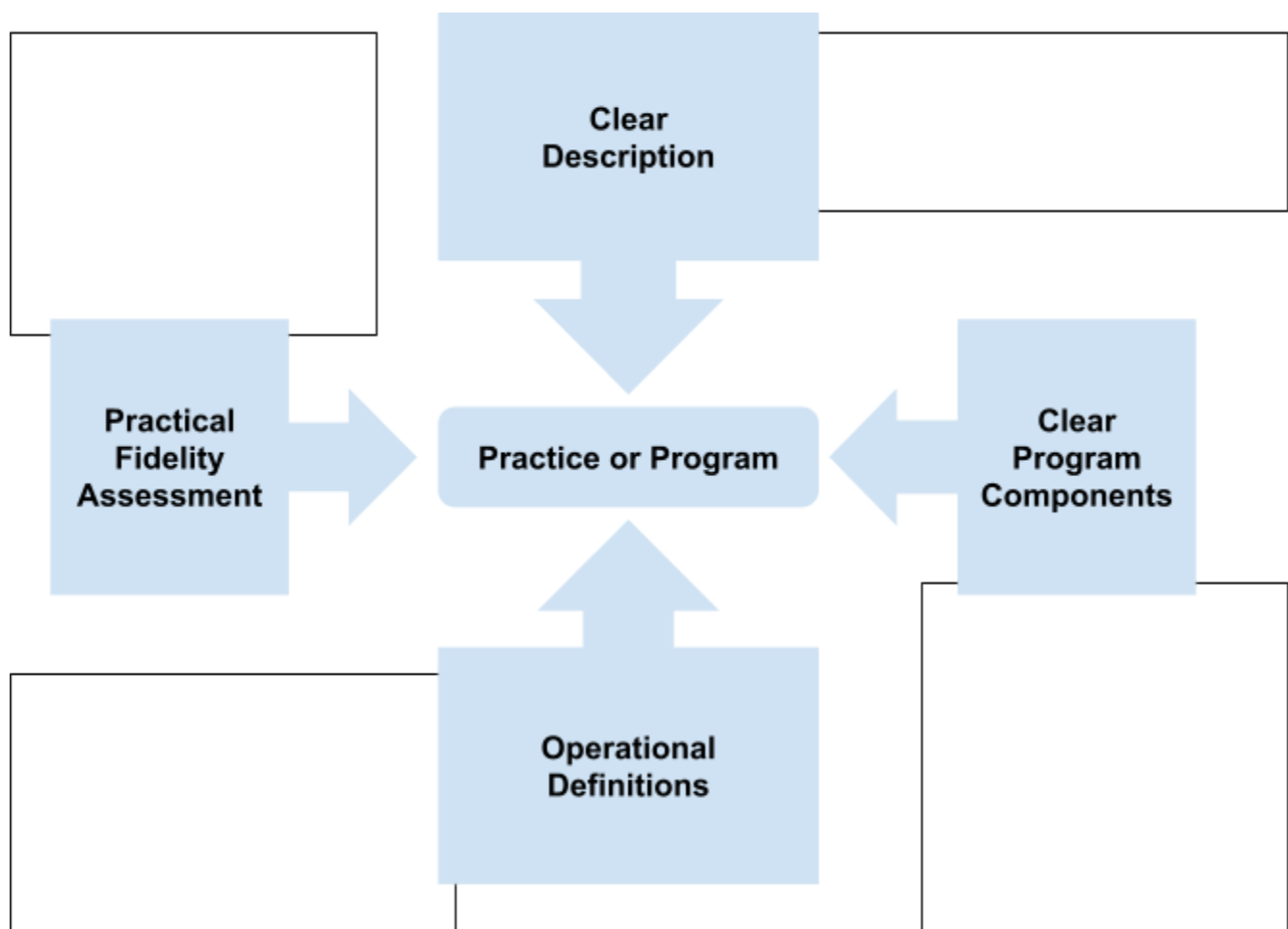
Activity 1.1

Is my Practice or Program Usable?

To be considered usable, practices and programs must have: a) clear descriptions that include the philosophy, values, and beliefs, b) clear program components that identify essential functions, c) operational definitions of the program components, and d) practical fidelity assessments to determine if the evidence-based practice is used as intended. Using the tasks below, choose a practice or program currently used in your organization to determine if it is usable.

Instructions

1. Identify a practice or program currently in use in your organization.
2. Use the usable innovation graphic to capture information for each criterion.



3. Does it meet the criteria of a usable innovation? Why or why not?

4. Do we have the internal expertise to move forward with the implementation of the usable innovation?

a. If yes, continue on through Module 1 to learn next steps for implementation.

b. If no, discuss with your team where expertise can be found and how to secure the necessary support.